

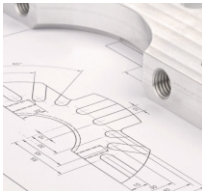
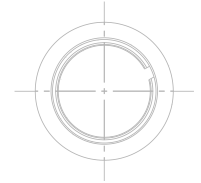
We do what we enjoy and what makes sense.



MSPROTECH

with passion for engineering

On a journey together
since 2016



Company history



In the spring of 2016, the Štoudek brothers founded the family company MS ProTech s.r.o. in the small village of Radiměř. Since that time, the team has grown to over 35 members. The company's primary work is the custom production of machinery components produced on CNC machines, stainless steel welded structures, and final construction of sub-assemblies as well as entire machines.

"When I look back, I must smile when I realize in what conditions we started and how much has happened since then. However, I can also see how much work is still ahead. After seven years, we are at the place where it is necessary to work even harder by polishing our organization and processes, and helping our team develop professionally. Which hopefully will lend us a larger share of the market."

Milan Štoudek

The milestones

2016

- The company was established by Milan and Libor Štoudek.
- First order for a Czech customer executed. Entry into the German and Belgian markets.
- Company seat established in Radiměř. It included spaces for CNC machining, welding of stainless steel constructions and assembly of special-purpose machines.



2017

- Expansion and Acquisition.
- Purchase of the first CNC lathe Mazak QT 300 ML.
- Establishment of the site in Uherský Ostroh.

2018

- Significant implementation - supply of a complete drying line for automotive industry.
- Exhibitor at Hannover Messe for the first time, then at Elmia Subcontractor in Sweden.
- Moving the site from Uherský Ostroh to more suitable place in Ostrožská Lhota. Investment in 2 new CNC machines.

2019

- Implementation of quality management system.
- Acquired the ČSN EN ISO 9001:2016 certificate.
- Entry into the Dutch, Swedish, Finnish and Danish markets.
- Participation as an exhibitor at Elmia Subcontractor in Jönköping, Sweden.
- Creating CAM workplace for programming of CNC machines.



2020

- Company grows to 25 employees.
- Entry into Icelandic market, participation in development and production of a start-up for electric grids monitoring.
- Establishment of control station using the latest measuring equipment at the site in Ostrožská Lhota.

2021

- Company digitalization and monitorization of production.
- Significant investment in 5-axis machining centre Mazak CV5-500.
- New production facility for the Morava plant in Hluk.
- Acquisition of 3-axis Kovošvit MAS MCV 1400 Quick.

2022

- Investment in 3D measuring equipment and contour gauge Mitutoyo.
- Expansion of CNC turning capacities with DMG CTX 420 a Mazak QT 200 ML.
- Acquisition of another 5-axis machine Mazak Variaxis C-600.
- Production process optimized with MES and APS system.

Company Figures

REVENUE (MIL. CZK)



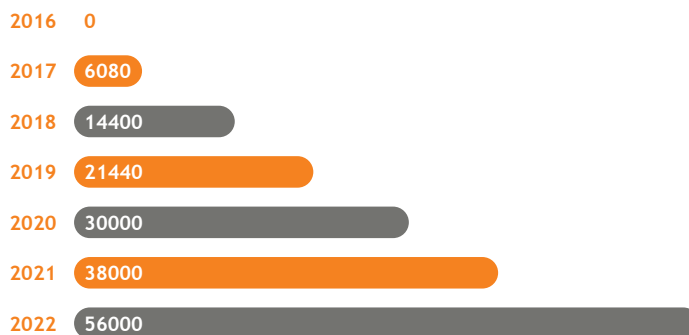
EMPLOYEES



INVENTORY



ANNUAL MACHINE HOURS CAPACITY





Company Figures

MAIN MARKETS (%)

Germany 38

Netherlands 26

Belgium 11

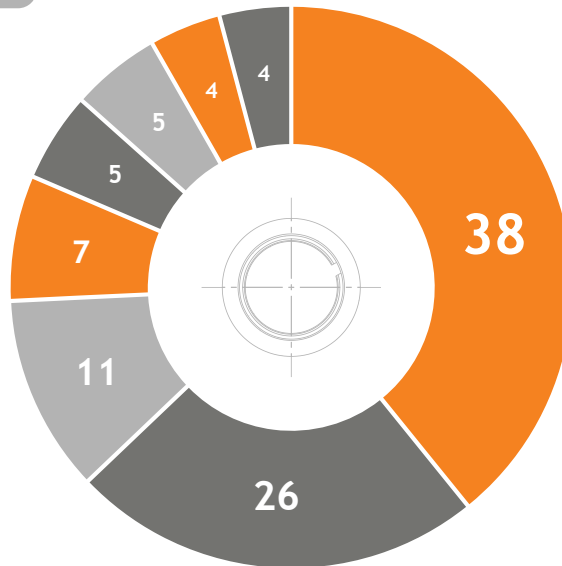
Czech Republic 7

Austria 5

Switzerland 5

Sweden 4

Iceland 4





Technology

We specialize in supplies of custom manufactured machine components, cutting technologies, sheet-metal forming and welding. We provide complete assemblies of machines and their parts as required by the customers. Our team of highly trained employees provides production of the parts in compliance with drawing documentation. We are committed to maintaining the highest quality standards. We aim at piece production, small and medium series production of milled, lathed, and ground parts.

We manufacture welded constructions with a specialization in stainless steel processing. Based on our customer requirements we provide mechanical assembly of machines, including hydraulic, pneumatic, and linear systems and electrical components. We constantly develop our knowledge, experience, and machinery for extending and improving production.

Mechanical Engineering Production Possibilities

- 5-axis and 3-axis CNC milling
- CNC Turning and milling on multi-spindle machines
- Cutting of materials using CNC saws
- Welding by TIG, MIG, MAG
- Laser Engraving
- Assembly and functionality testing
- Measuring and testing, incl. generation of measurement protocols
- Production of welded structures with specialisation in stainless steel processing





Technology

CHIP MACHINING

The experience of professionals combined with the use of the latest technologies for chip machining. This combination allows us to bring unique quality products to the market. We take over the complete responsibility for product delivery from the customer and offer a logistically interesting and clever one-stop solution. We offer comprehensive solutions in the field of chip machining on conventional and CNC machines, whether it is turning with driven tools, five-axis milling, EDM, or grinding.



WELDED STRUCTURES

MS ProTech is a partner supplier of a wide range of engineering services. We design, manufacture and install welded structures, machine frames, tanks, covers, electrical switchboards, and more. We can process all common materials and provide a variety of finishes for the final products. The possibility of professionally executed final assembly of the equipment is a matter of course. Our specialty is stainless steel processing mainly for the food and medical industry.



Technology

ASSEMBLIES

We provide complete project support in the production of single-purpose machines. We take over the assembly and installation of machine subassemblies and complete equipment from our customers. We work with supplied production documentation and offer the possibility to take on the project including design and complete drawings. As the main supplier, we take care of the complete provision of individual components of the required quality. We perform mechanical assembly in combination with pneumatic and hydraulic elements, including electrical installation. Testing the equipment and handing it over to the customer with all the necessary documents is a matter of course.



We supply the following equipment

- **Conveyors**
- Single-purpose machines
- **Assembly workplaces**
- Test equipment
- **Assembly, positioning, and inspection fixtures**
- Assembly of sub-assemblies

On demand

- **Electro-erosive machining**
- Grinding
- **Separation of sheets by laser, water jet and plasma**
- Bordering and rolling of metal sheets
- **Laser welding**
- Surface and heat treatments

Technology

State-of-the-Art Technology

- Mazak QT 200MSY L
- DMG CTX 420
- Mazak VCN 530C
- Mazak Variaxis C-600
- Kornosvit MAS MCV 1400 Quick
and others...



Our Team

I have been a member of the team for two and a half years and I am very happy at the position of CNC lathe operator. My work changes and every day there is an “adventure” with interesting new challenges. We have a great team where everyone can help, give advice and is respectful to each other. I like the direction the company is heading for and the progress we’ve made. Proof is the variety and quality of our customers. I definitely intend to stay with the company and develop my skills.



René Gruber - CNC lathe operator

I have been working for MS ProTech for two years. Working for this team really appealed to me. It's a family business that maintains good relationships both with employees, external suppliers, and customers. The company is developing very quickly, entering the foreign market and investing in quality equipment. I work in five-axis CNC milling. During my work, the company constantly gives me the opportunity to improve myself in the field of machining technology and CNC machine programming. At the same time, it provides professional training and allows me to improve my qualifications. Our team pursues a clear goal, is able to cooperate and support each other in every situation.



Jiří Krbec - production technologist

Our Team

I have worked at MS ProTech for six years at the position of sales and customer associate. My position allows me to meet many interesting people throughout Europe as the business grows internationally. The company has grown fast establishing its industry footprint a leader in the field. As CNC technology continues to advance year-over-year, MS ProTech is positioned to grow with the market for the foreseeable future.



Matthew Gardner (USA) - commercial

This is my fifth year working as an assistant. I am happy that I can be a part of a company that evolves so dynamically and still emphasizes maintaining order and development of organization. After maternity leave my position is a big opportunity and motivation how to work on my professional skills and, at the same time, to contribute and thus be a support for entire team. I like working with our team and I am glad that we can communicate successfully with respect support.



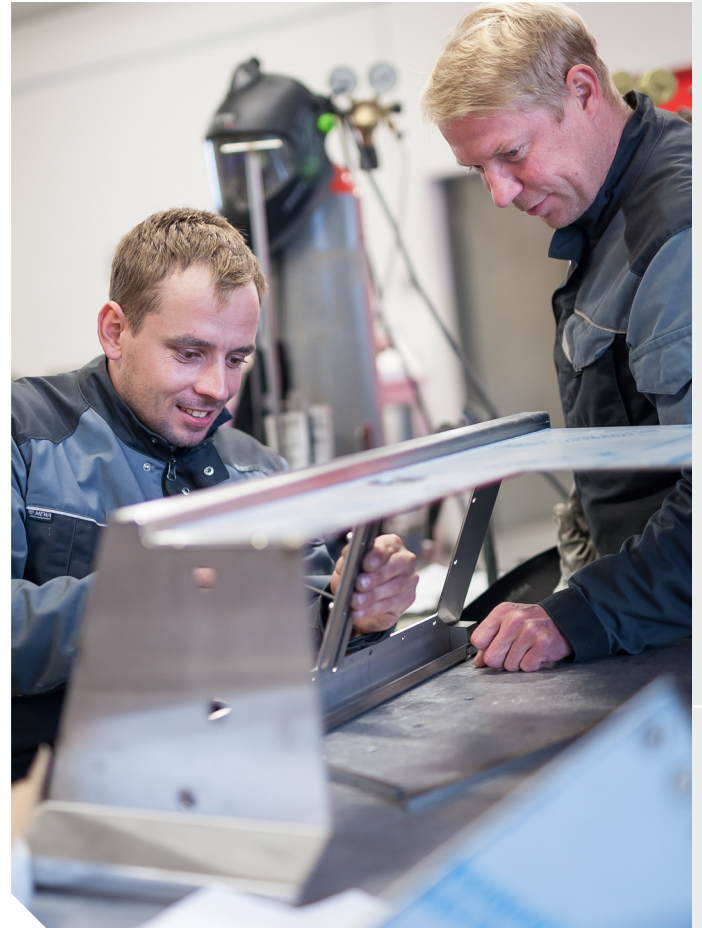
Petra Šplíchalová - assistant

Our Team

I value the company's strong position that it has managed to acquire in a very short time. I would say that it is thanks to our evolving young team that is not afraid of challenges and modern technologies. I am glad that I can share my experience gained over the years of practice as a welder with younger colleagues. It is our young and friendly team that is my driving force at work I enjoy. I can see our company's power in the fact that any problem is not an individual's problem but all of us contribute to solving it.



Aleš Dušek - welder





Future Vision

Our vision is to reduce the need for operators presence with individual machines to a minimum and to fully use human potential by appropriate automation. Thanks to continuous investment we can keep up with competitors and provide products that are more sophisticated. By market diversity and wise investments, whether into our employees or into technology, we will face up to the future and we believe that the future will be successful.



Libor Štoudek - commercial department manager

Just as the moments of first staff recruitment, purchase of the first machine or first fair were key for us, in the coming five years we plan to take several steps that will be of such importance. The first of them will be construction of a new production hall that will provide significantly greater potential for the growth of our company. A higher proportion of automation and use of robots where it is possible will be another step how to be a more interesting partner on the market for customers and for employees. I believe that when we look back what we accomplished after the next five years, we will be surprised again how far we got.

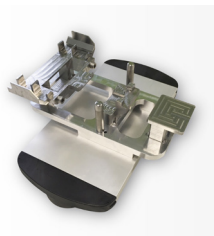
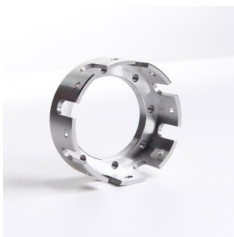


Milan Štoudek - company director



If you are looking for a stable partner who is able to offer long-term cooperation, do not hesitate to contact us.
Our team of professionals is here to help you with an excellent quality custom manufacturing solution.

MS ProTech management



MS ProTech s.r.o.
Radiměř 469
CZ - 569 07 Radiměř

+420 513 036 341
info@ms-protech.cz



www.ms-protech.cz