

We do what we enjoy and what makes sense.



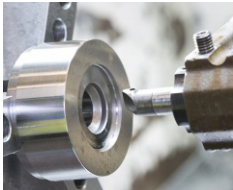
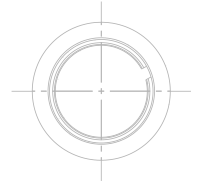
MSPROTECH

with passion for engineering



5 years on a journey together

2016 - 2021



Company history



This year we celebrate the 5th anniversary of the company's operation. In spring 2016, when Štoudek brothers established a family company in Radiměř and they were the only company employees. Since its foundation the company has focused on custom manufacture of broad spectrum of machine components and complete assemblies of machines. The company has gradually acquired an important position on the Czech and foreign markets, built another site and the current number of employees has grown to 30.

“When I look back, I must smile when I realize in what conditions we started and how much has happened since then. However, I can also see how much work is still ahead. After five years we are at the place where it is necessary to work even harder, polish organization and processes, help our people more in professional development and, of course, gain a greater part of the market.” **Milan Štoudek**

The milestones

2016

- The company was established by Milan and Libor Štoudek.
- First order for a Czech customer executed. Entry into the German and Belgian markets and first orders executed.
- Company seat established in Radiměř. It included spaces for CNC machining, welding of stainless steel constructions and assembly of special-purpose machines.



2017

- Expansion and Acquisition
- Purchase of the first CNC lathe Mazak QT 300 ML.
- Establishment of the site in Uherský Ostroh.

2018

- Significant implementation - supply of a complete drying line for automotive industry.
- Exhibitor at Hannover Messe for the first time, then at Elmia Subcontractor in Sweden.
- Moving the site from Uherský Ostroh to more suitable place in Ostrožská Lhota. Investment in 2 new CNC machines.

2019

- Implementation of quality management system
- Acquired the ČSN EN ISO 9001:2016 certificate.
- Entry into the Dutch, Swedish, Finnish and Danish markets.
- Participation as an exhibitor at Elmia Subcontractor in Jönköping, Sweden.
- Creating CAM workplace for programming of CNC machines.

2020

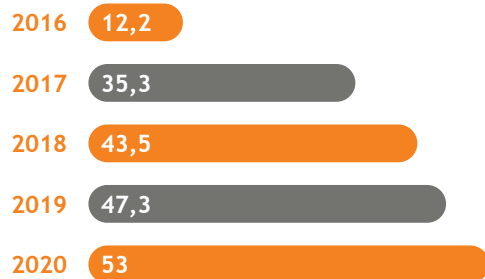
- Company grows to 25 employees
- Entry into Icelandic market, participation in development and production of a start-up for electric grids monitoring.
- Establishment of control station using the latest measuring equipment at the site in Ostrožská Lhota.

2021

- Company digitalization and monitorization of production
- Significant investment in 5-axes machining centre Mazak CV5-500.

Company Figures

REVENUE (MIL. CZK)



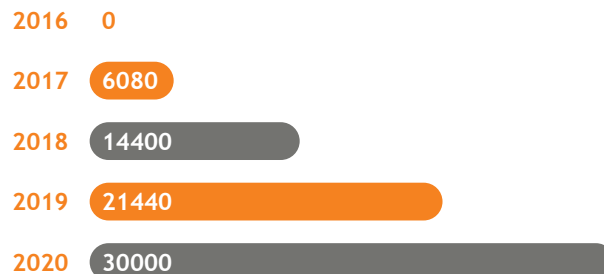
INVENTORY



EMPLOYEES

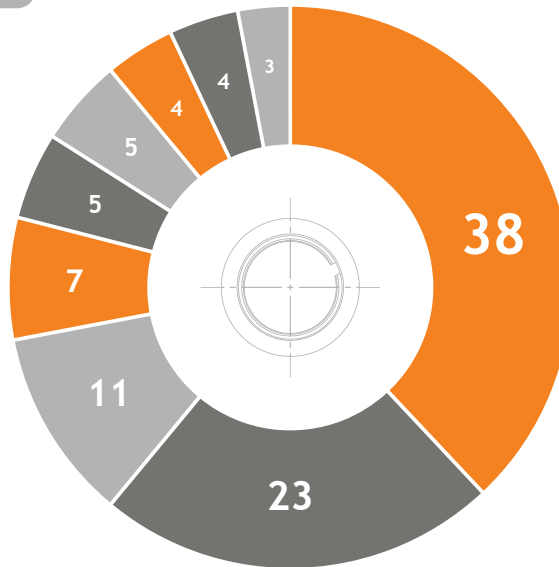
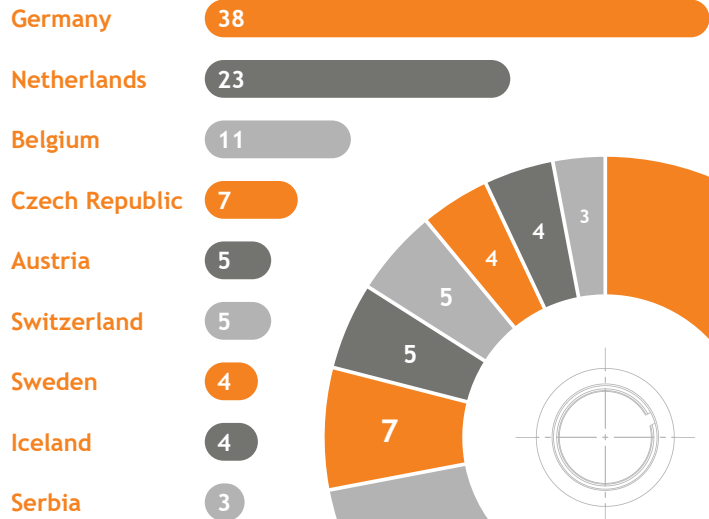


ANNUAL MACHINE HOURS CAPACITY



Company Figures

MAIN MARKETS (IN %)





Technology

We specialize in supplies of custom manufactured machine components, cutting technologies, sheet-metal forming and welding. We provide complete assemblies of machines and their parts as required by the customers. Our team of highly trained employees provides production of the parts in compliance with drawing documentation. We care for excellent quality exactly as the customers wish. We aim at piece production, small and medium series production of milled, lathed, and ground parts.

We manufacture welded constructions with a specialization in stainless steel processing. Based on our customer requirements we provide mechanical assembly of machines, including hydraulic, pneumatic, and linear systems and electrical components. We constantly develop our knowledge, experience, and machinery for extending and improving production.

Applied Technologies

EQUIPMENT

- 5-axes and 3-axes CNC milling
- CNC Turning and milling on multi-spindle machines
- Separation of materials using CNC saws
- Welding by TIG, MIG, MAG
- Laser Engraving
- Assembly and functionality testing
- Measuring and testing, incl. generation of measurement protocols

ON DEMAND

- Electro-erosive machining
- Grinding
- Separation of sheets by laser, water jet and plasma
- Bordering and rolling of metal sheets
- Laser welding
- Surface and heat treatments

Our Team

I have been a member of the team for only half a year but I am very happy at the position of CNC lathe operator. My work changes and every day there is an “adventure” with interesting new challenges. We have a great team where everyone can help, give advice and is respectful to each other. I like the direction the company is heading for and the progress we’ve made. Proof is the variety and quality of our customers. I definitely intend to stay with the company and develop my skills.



René Gruber - CNC lathe operator

I joined MS ProTech last year in September as a CNC milling machine operator. After half a year, I got the opportunity to become the production technologist. The fact that it is a family company relying on building relationships with our customers is very important for me. I am glad I can bring my knowledge and practical experience to help with further development of our machining production. Not only can I contribute to company development, but also get the chance to improve my technical and professional qualifications. I appreciate the opportunity to work with state of the art machines, and work with a supportive team that is moving toward a common goal.



Roman Roušar - production technologist

Our Team

I have worked at MS ProTech for four years at the position of sales and customer associate. My position allows me to meet many interesting people throughout Europe as the business grows internationally. The company has grown fast establishing its industry footprint a leader in the field. As CNC technology continues to advance year-over-year, MS ProTech is positioned to grow with the market for the foreseeable future.



Matthew Gardner (USA) - commercial

This is my third year working as an assistant. I am happy that I can be a part of a company that evolves so dynamically and still emphasizes maintaining order and development of organization. After maternity leave my position is a big opportunity and motivation how to work on my professional skills and, at the same time, to contribute and thus be a support for entire team. I like working with our team and I am glad that we can communicate successfully with respect support.



Petra Šplíchalová - assistant

Our Team

I value the company's strong position that it has managed to acquire in a very short time. I would say that it is thanks to our evolving young team that is not afraid of challenges and modern technologies. I am glad that I can share my experience gained over the years of practice as a welder with younger colleagues. It is our young and friendly team that is my driving force at work I enjoy. I can see our company's power in the fact that any problem is not an individual's problem but all of us contribute to solving it.



Aleš Dušek - welder





Future Vision

Our vision is to reduce the need for operators presence with individual machines to a minimum and to fully use human potential by appropriate automation. Thanks to continuous investment we can keep up with competitors and provide products that are more sophisticated. By market diversity and wise investments, whether into our employees or into technology, we will face up to the future and we believe that the future will be successful.



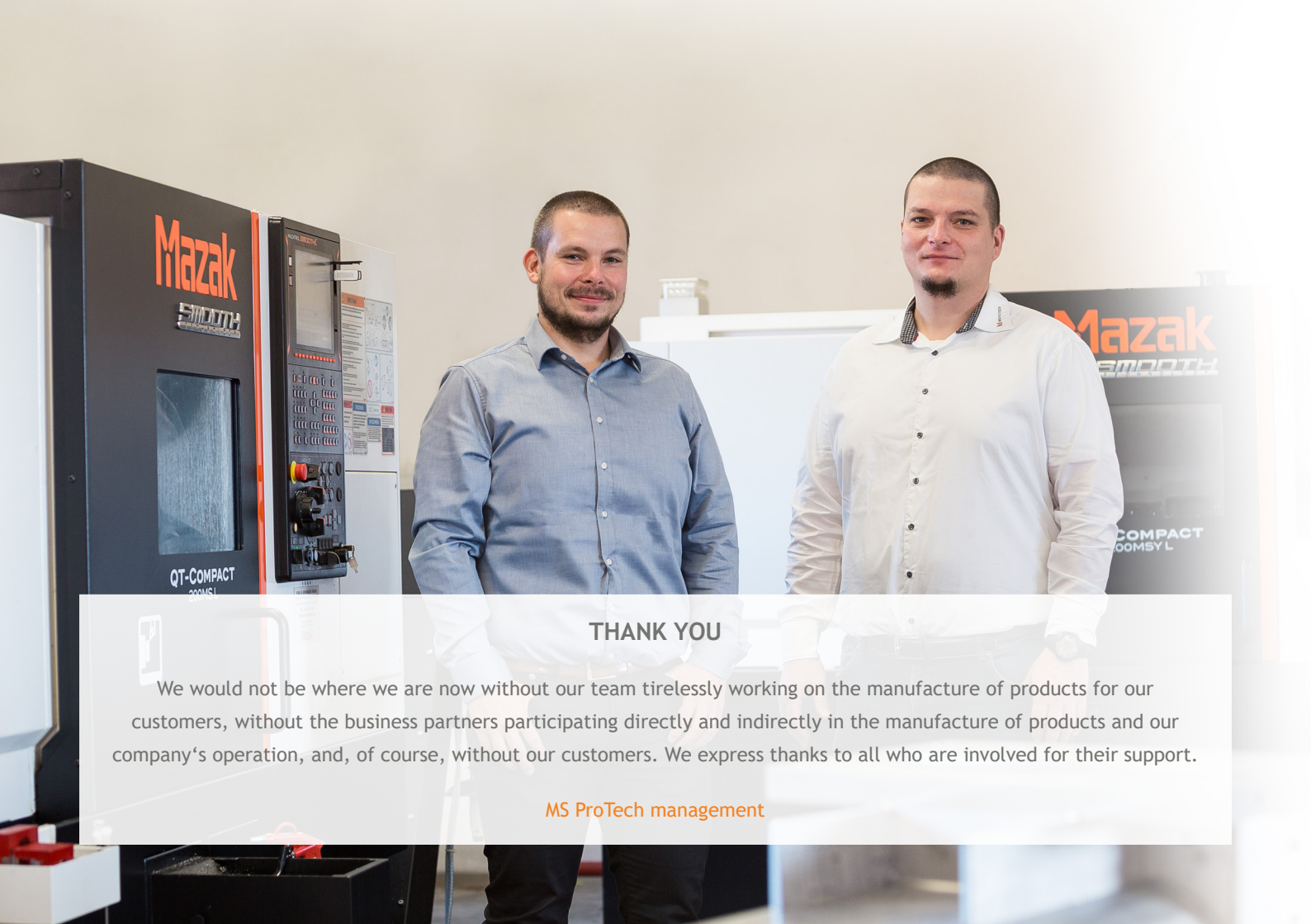
Libor Štoudek - commercial department manager

Just as the moments of first staff recruitment, purchase of the first machine or first fair were key for us, in the coming five years we plan to take several steps that will be of such importance. The first of them will be construction of a new production hall that will provide significantly greater potential for the growth of our company. A higher proportion of automation and use of robots where it is possible will be another step how to be a more interesting partner on the market for customers and for employees. I believe that when we look back what we accomplished after the next five years, we will be surprised again how far we got.



Milan Štoudek - company director





THANK YOU

We would not be where we are now without our team tirelessly working on the manufacture of products for our customers, without the business partners participating directly and indirectly in the manufacture of products and our company's operation, and, of course, without our customers. We express thanks to all who are involved for their support.

MS ProTech management



MS ProTech s.r.o.
Radiměř 469
CZ - 569 07 Radiměř

+420 513 036 341

www.ms-protech.cz